

Laura McShane

PreK Skunks in Spring 35 min

Objective:

Work on S animals sounds and drawing S in a craft activity.

Big Idea:

Continue to build empathy skills by featuring animal stories to introduce vocabulary and letter recognition.

1. Warm Up / Anticipatory 5 min

Hello song - introduce animals that start with the letter S - sheep, seal, salamander, stork, snake, sloth - today we are talking about an animal that sometimes "stinks" - SKUNKS!

"I'm a Little Striped Skunk" (sung to "I'm a Little Tea Pot tune)

I'm a little striped skunk, black and white.
I sleep through the day and wake at night.
When the sun goes down, it's time to eat.
So, I dig up bugs with the claws on my feet.

I can smell so stinky, yes, it is true.
If you frighten me, I might spray you.
Spraying helps me keep the enemies away
So, I can stay safe, when I hunt and play.

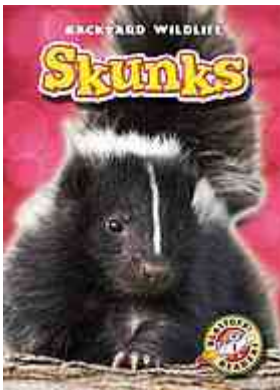
2. Investigation and New Learning 20 min

Reading first - [Skunk's Spring Surprise](#) by Lesl'ea Newman - illustrated by Valeri Gorbachev



Lovely illustrations and rhyming text

Second reading - [Backyard Wildlife: Skunks](#) by Emily Green



Bold text -glossary and additional resources

3. Review & Check for Understanding 30 min

[Craft activity - S for Skunk](#)



Skunk shape: stripes, spots, bushy tail, black-and-white

Skunk behavior: hibernate, sleep, spray, hiss, scare

Standards: RI.K.1. RI.K.2. (K.9) K.10 (A) K.11 (A) RI.K.4. RI.K.8. L.K.6. L.K.5.C. W.K.2. RF.K.4. (K.15) 110.11 (B) K.RN.4.1. K.RN.3.2. K.RV.1.1. K.RV.3.2. K.W.3.2. K.RN.2.2. K.RN.2.1. 110.11 (C) 110.11 (F) K.10 (B) K.RF.1.1. [3] SA1.2. [3] SA3.1. LA 0.2.2.A. LA 0.1.6.M. LA 0.4.1.A. K.8.A) K.9.B) LA 0.1.6.I. LA 0.1.6.E. K.I.3.1. LA 0.1.5.B. LA 0.1.5.C. LA 0.1.6.D. 0.2.1.1. 0.2.2.2. SC2. [3] SC4.1. [3] SC2.2. [3] SC2.1. 0.10.6.6. 0.10.5.5.C. 0.2.4.4. 0.2.8.8. 0.3.0.4. 0.6.2.2. K.LS.2. K.6 (C) 3.1. K.RI.LCS.9.1. K.RI.LCS.9.2. K.RI.LCS.11.2. K.RI.MC.6.1. K.RI.P.4.1. RI.K.1 K.RL.P.4.1. K.RL.LCS.9.2. K.RL.LCS.10.2. K.W.MCC.2.1. K.RL.LCS.10.1. RI.K.8 L.K.5C W.K.2 RF.K.4 RI.K.4 K.C.MC.2.1. K.L.2A.1. K.L.2A.3. L.K.6 RI.K.2 [3] SA3.1. [3] SA1.2. W.1.2. L.1.4.A. L.1.5.C. [3] SC2.1. [3] SC4.1. 1.1.3.1.1. 1.10.5.5.C. 1.4.1.1.1. SC2. RF.1.4.A. [3] SC2.2. RI.1.1. 5.1. 1.10.4.4.A. 3.1. 2.1. 2.1. 1-LS1-1. RL.1.4. RI.1.7. RI.1.6. RI.1.4. RI.1.2. RI.1.10. 1.2.7.7. 1.8.A) RI.1.6 RI.1.4 LA 1.4.1.A. 1.8.B) 1.8.C) 1.10.F) 1.8.E) 1.8.D) LA 1.2.2.A. LA 1.2.1.C. LA 1.1.5.B. RI.1.2 RI.1.1 LA 1.1.5.C. LA 1.1.6.E. LA 1.1.6.O. LA 1.1.6.M. LA 1.1.6.I. 1.10.1.1. 1.5.B) 1.2.4.4. 1.2.2.2. 1.2.1.1. 1.2.6.6. 1.1.2.1. 1.3.0.4.A. 1.2.10.10. 1.2.8.8. 1.1.4.4. L.1.5C RI.1.8 RI.1.7 1.5.C) RI.1.10 RF.1.4A L.1.4A W.1.2 RF.1.4C 1.6.2.2. RF.1.4.C. 1.RL.LCS.10.2. 1.RI.MC.6.1. 1.RI.LCS.8.1. 1.RN.4.1. 1.RV.1.1. 1.RV.3.2. 1.RV.2.1. 1.RI.LCS.9.1. 1.RN.2.2. 1.W.MCC.2.1. 1.RI.LCS.11.2. 1.RI.LCS.9.2. 1.RF.1.1. 1.I.3.1. 1.RN.2.1. 1.RN.1.1. 1.LS.2. 1.RV.3.1. 1.19 (A) 1.15 (A) 1.14 (B) 110.12 (C) 110.12 (D) 110.12 (F) 1.10 (A) 1.14 (A) 1.18 (B) 1.4 (B) 1.RL.LCS.9.2. (1.11) 1.6 (C) 110.47.4 (C) 110.47.3 (D) 110.47.3 (C) 110.47.3 (B) 110.48.2 (A) 110.47.8 (D) 110.47.6 (A) 110.47.2 (A) 110.47.5 (B) 110.47.6 (C) 110.47.1 (A) E1.1.2.1. 110.48.5 (A) 110.48.6 (C) 110.51.5 (A) SC2. 110.34 (B) 110.34 (A) 110.52.1 (A) 110.46.1 (A) EIV.14 (A) [10] SC2.1. E1.RI.LCS.9.1. E1.RI.MC.6.1. E1.RI.MC.5.2. E1.RI.LCS.9.2. E1.RI.LCS.9.3. E1.RI.LCS.9.5. E1.RI.LCS.9.4. E1.RI.MC.5.1. RI.9-10.4. E1.RI.P.4.3. 110.48.4 (E) 110.48.3 (A) 110.48.2 (F) RI.9-10.2. RI.9-10.1. E1.W.MCC.3.1.F. E1.C.MC.1.1. W.9-10.10. W.9-10.8. L.9-10.4.A. L.9-10.4.D. 110.48.4 (F) L.9-10.6. W.9-10.5. W.9-10.4. E2.RI.P.4.1. E2.I.2.1. E2.RI.P.4.3. E2.RI.MC.5.1. W.9-10.3.D. EIV.9 (D) [10] SC3.2. EIII.1 (A) E3.W.MCC.3.1.1. E3.RI.LCS.11.2. E3.RI.LCS.9.5. E3.C.MC.1.1. E4.I.2.1. E1.RI.P.4.1. E4.RI.P.4.1. E3.RI.LCS.9.4. E3.RI.LCS.9.3. (E1.8) 110.31 (A) E1.1 (A) 10.3.F) E3.RI.LCS.9.2. 10.5.F) E4.RI.P.4.3. E4.RI.MC.5.1. E4.C.MC.1.1. E4.W.MCC.3.1.1. E4.RI.LCS.11.2. 10.5.1.1. BIO.6.A) 110.52.1 (C) BIO.8.A) E4.RI.LCS.9.5. E4.RI.LCS.9.4. E4.RI.MC.6.1. E4.RI.MC.5.2. E4.RI.LCS.8.1. E4.RI.LCS.9.1. E4.RI.LCS.9.3. E4.RI.LCS.9.2. 110.31 (B) EII.1 (A) EII.14 (A) 110.32 (A) 110.32 (B) E2.RI.MC.5.2. E2.RI.MC.6.1. E2.RI.LCS.9.1. E2.RI.LCS.8.1. EIII.1 (B) EIII.1 (C) EIV.1 (A) EIV.1 (B) 110.33 (B) 110.33 (A) EIII.9 (B) EIII.14 (A) E2.RI.LCS.9.2. E2.RI.LCS.9.3. E3.RI.LCS.8.1. E3.RI.MC.6.1. E3.RI.MC.5.2. E3.RI.LCS.9.1. EII.9 (B) EII.1 (C) (EII.8) E3.RI.MC.5.1. E3.RI.P.4.3. E2.RI.LCS.9.5. E2.RI.LCS.9.4. E2.W.MCC.3.1.F. E2.C.MC.1.1. E3.RI.P.4.1. E3.I.2.1. (EIV.8) 9-11.11 (B) 9.11.6.6. 12.3.4.A. LA 10.4.1.A. 9.11.4.4.D. 9.11.4.4.A. 9.7.5.5. 9.7.8.8. LA 10.2.2.A. LA 10.2.1.1. LA 10.1.6.1. LA 10.1.6.F. LA 10.1.6.E. LA 10.1.6.I. LA 10.1.6.M. LA 10.2.1.C. LA 10.1.6.O. 9.7.4.4. 9.7.3.3.D. L.9-10.4A W.9-10.10 W.9-10.8 5.1. L.9-10.4D 110.53.1 (A) L.9-10.6 W.9-10.5 W.9-10.4 9.5.2.2. 9.5.4.4. 9.5.1.1. RI.9-10.2 W.9-10.3D RI.9-10.4 LA 10.1.5.D. RI.9-10.1 9-10.RN.2.2. 9-10.RV.1.1. 9-10.RN.2.1. 9-10.RN.1.1. LA 10.1.4.A. 9-10.W.4.1A. 9-10.RV.2.1. 9-10.RV.2.2. 110.54.3 (B) 110.54.5 (A) 110.53.3 (B) 110.54.5 (B) 9-11.12 (A) 110.55.2 (C) LA 10.1.5.C. 9-10.W.3.3E. 110.53.1 (B) 11.5.A) E2.W.MCC.3.1.F. E2.RI.LCS.9.5. 11.5.D) RI.11-12.1 11.5.1.1. RI.11-12.4 RI.11-12.2 E2.RI.LCS.9.4. E2.RI.LCS.9.3. 11.3.F) E2.RI.MC.5.2. E2.RI.MC.5.1. E2.RI.MC.6.1. E2.RI.LCS.8.1. E2.RI.LCS.9.2. E2.RI.LCS.9.1. BIO.6.A) BIO.8.A) W.11-12.8 W.11-12.5 110.52.1 (A) W.11-12.10 L.11-12.4A 110.53.1 (A) 110.52.1 (C) L.11-12.4D E2.RI.P.4.3. 110.51.5 (A) 110.48.4 (F) 11-12.W.4.1A.