



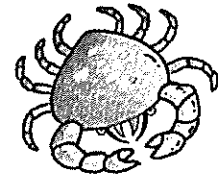
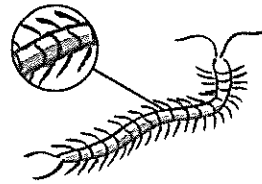
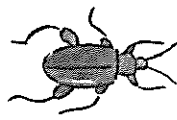
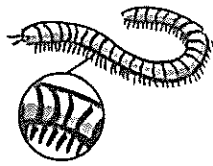
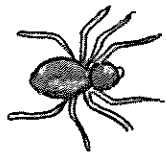
# What kind of animal is this?

## Science facts

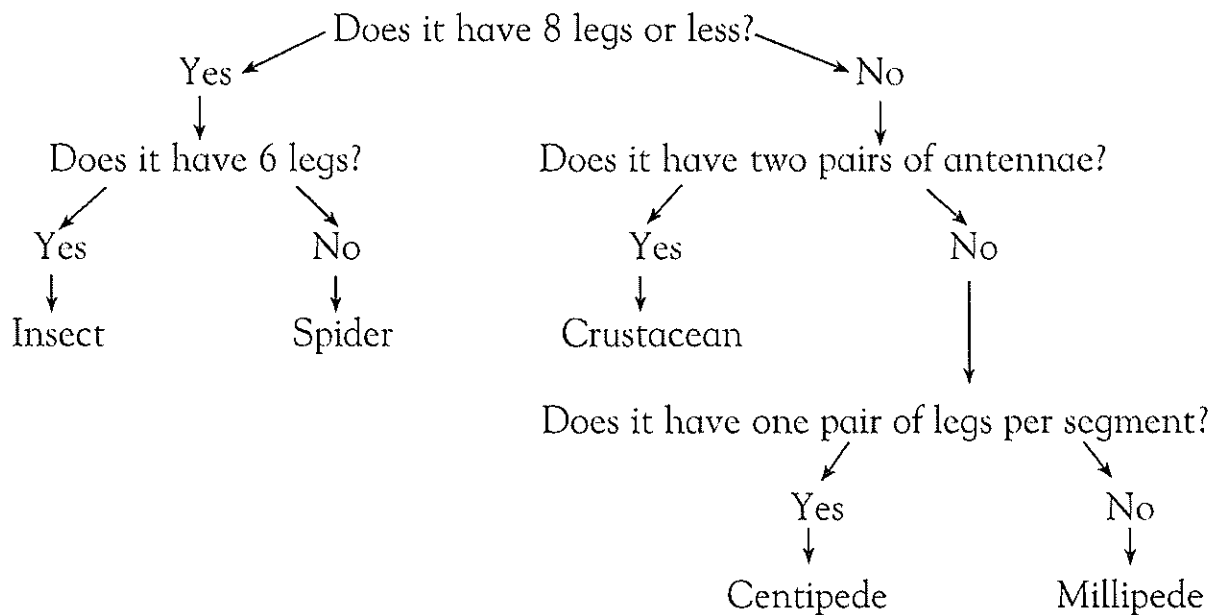
There are many different species of animal. Scientists use keys to identify them. Being able to use keys is an important skill. To find the name of an animal, you can use a branching key. Start at the top of the key and answer Yes or No to each question. Follow the branches until you reach the end.

## Science quiz

Arthropods are small animals with jointed legs. The word **arthropod** means "jointed legs".



Use this Yes/No key to identify each type of arthropod shown above.



## Science activity

You will need some gloves and tweezers for this activity. In autumn, collect some leaf litter (damp, dead leaves) and spread it out on some newspaper. Carefully examine it using the tweezers. Can you find any arthropods? Use the key above to identify them.

